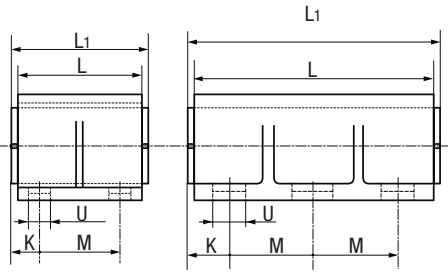
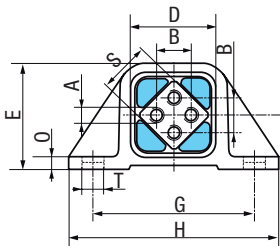
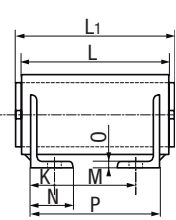
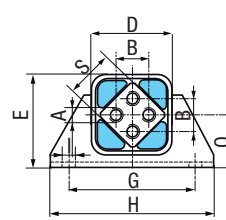


ÉLÉMENTS SIMPLES À PATTES

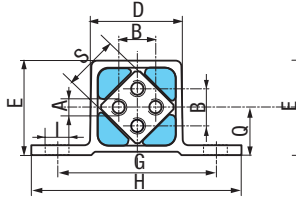
DW-A 45 & 50



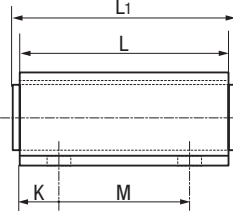
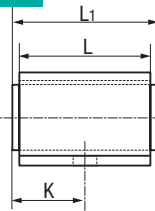
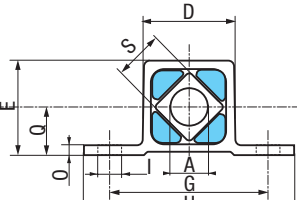
DW-A 60 à 100



DW-A 15 à 38

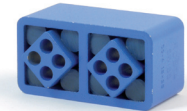
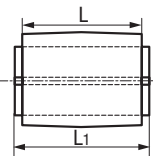
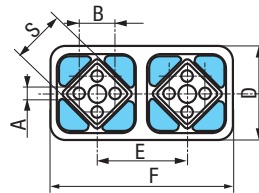
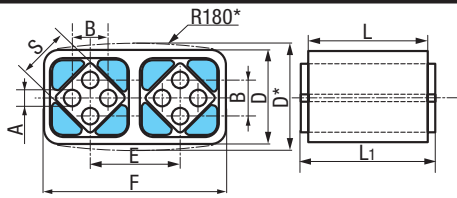


DW-C 15 à 38



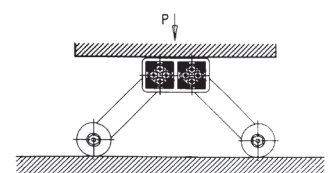
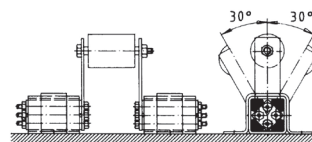
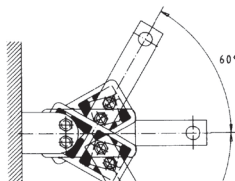
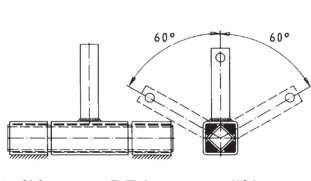
ÉLÉMENTS JUMELÉS

DOA 15 à 50...



MONTAGE EN PARALLÈLE

MONTAGE EN SÉRIE



2 éléments DRA en parallèle
- Angle de torsion ($\pm 30^\circ$)
- Couple doublé

1 élément DOA fonctionnant en parallèle

	DWA + DWC													DWA					DWC		
	A ^{+0,5}	L	L1	D	E	G	H	I	K	M	O	Q	S	B	N	P	T	U	Poids en kg	A	Poids en kg
15 x 25	5	25	30	28	29	50	65	7	15	-	3	15	15	10 $\pm 0,2$	-	-	-	-	0,05	10	0,04
15 x 40	5	40	45	28	29	50	65	7	22,5	-	3	15	15	10 $\pm 0,2$	-	-	-	-	0,07	10	0,07
15 x 60	5	60	65	28	29	50	65	7	12,5	40	3	15	15	10 $\pm 0,2$	-	-	-	-	0,11	10	0,11
18 x 30	6	30	35	34	35	60	80	9	17,5	-	3,5	18	18	12 $\pm 0,3$	-	-	-	-	0,08	13	0,08
18 x 50	6	50	55	34	35	60	80	9	27,5	-	3,5	18	18	12 $\pm 0,3$	-	-	-	-	0,13	13	0,13
18 x 80	6	80	85	34	35	60	80	9	17,5	50	3,5	18	18	12 $\pm 0,3$	-	-	-	-	0,21	13	0,21
27 x 40	8	40	45	48	49	80	105	11	22,5	-	4,5	25	27	20 $\pm 0,4$	-	-	-	-	0,21	16	0,21
27 x 60	8	60	65	48	49	80	105	11	32,5	-	4,5	25	27	20 $\pm 0,4$	-	-	-	-	0,31	16	0,31
27 x 100	8	100	105	48	49	80	105	11	22,5	60	4,5	25	27	20 $\pm 0,4$	-	-	-	-	0,52	16	0,52
38 x 60	10	60	70	66	67	100	125	13	35	-	6	34	38	25 $\pm 0,4$	-	-	-	-	0,59	20	0,59
38 x 80	10	80	90	66	67	100	125	13	25	40	6	34	38	25 $\pm 0,4$	-	-	-	-	0,77	20	0,77
38 x 120	10	120	130	66	67	100	125	13	25	80	6	34	38	25 $\pm 0,4$	-	-	-	-	1,15	20	1,05
45 x 100	$\emptyset 12$	100	110	78	80	115	145	-	22,5	65	8	41	45	35 $\pm 0,5$	-	-	13	20	2,9		
50 x 120	M12 x 40	120	130	87	88	130	170	-	35	60	12	45	50	40 $\pm 0,5$	-	-	17	27	3,7		
50 x 160	M12 x 40	160	130	87	88	130	170	-	35	70	12	45	50	40 $\pm 0,5$	-	-	17	27	5,0		
50 x 200	M12 x 40	200	210	87	88	130	170	-	35	70	12	45	50	40 $\pm 0,5$	-	-	17	27	6,1		
60 x 150	M16 x 22	150	160	100	115	160	220	18	50	60	8	65	60	45	60	130	-	-	9,5		
60 x 200	M16 x 22	200	210	100	115	160	220	18	55	100	8	65	60	45	60	170	-	-	11,8		
60 x 300	M16 x 22	300	310	100	115	160	220	18	55	200	8	65	60	45	60	270	-	-	16,6		
70 x 200	M20 x 28	200	210	120	140	200	260	22	55	100	9	80	70	50	65	170	-	-	16,6		
70 x 300	M20 x 28	300	310	120	140	200	260	22	55	200	9	80	70	50	65	270	-	-	23		
70 x 400	M20 x 28	400	410	120	140	200	260	22	55	300	9	80	70	50	65	370	-	-	29,5		
80 x 200	M20 x 28	200	210	136	153	220	280	22	65	80	10	85	80	60	80	170	-	-	22,9		
80 x 300	M20 x 28	300	310	136	153	220	280	22	65	80	10	85	80	60	80	270	-	-	31,7		
80 x 400	M20 x 28	400	410	136	153	220	280	22	65	80	10	85	80	60	80	370	-	-	40,6		
100 x 250	M24 x 32	250	260	170	195	300	380	26	75	100	12	110	100	75	100	220	-	-	45,7		
100 x 400	M24 x 32	400	410	170	195	300	380	26	75	100	12	110	100	75	100	370	-	-	66,7		
100 x 500	M24 x 32	500	510	170	195	300	380	26	75	100	12	110	100	75	100	470	-	-	80,7		